



Vietnam Pot Co., Ltd
A Pottery Supplier From Vietnam

2027 POTTERY CATALOGUE

Ceramic Bonsai Pots

- Each style of Ceramic Bonsai Pot has 4 available sizes: 6", 8", 10", 12"
- Each Bonsai Pot is sold / supplied with a loose matching saucer





Vietnam Pot Co., Ltd
A Pottery Supplier From Vietnam

2027 POTTERY CATALOGUE
Glazed Ceramic Bonsai Pots

Item #: VNP70545
4 available sizes



Item #: VNP70545- 6"
6" Bonsai Pot with saucer
 Product N.W: 2.20 Lbs
 Packing: 216 pcs/crate
 Crate Meas.: 43.5 cbf
MOQ: 2 crates = 432 pcs,
 for max. 2 colors



Item #: VNP70545- 8"
8" Bonsai Pot with saucer
 Product N.W: 3.31 Lbs
 Packing: 120 pcs/crate
 Crate Meas.: 55.0 cbf
MOQ: 3 crates = 360 pcs,
 for max. 2 colors



Item #: VNP70545- 10"
10" Bonsai Pot with saucer
 Product N.W: 4.41 Lbs
 Packing: 64 pcs/crate
 Crate Meas.: 58.0 cbf
MOQ: 4 crates = 256 pcs,
 for max. 2 colors



Item #: VNP70545- 12"
12" Bonsai Pot with saucer
 Product N.W: 5.51 Lbs
 Packing: 36 pcs/crate
 Crate Meas.: 55.5 cbf
MOQ: 6 crates = 216 pcs,
 for max. 2 colors



Besides the below available colors, more color choices can be made from the attached Color Chart



Red (+25%)



Moss Green (+5%)



White



Shiny Brown



Running Blue



Vietnam Pot Co., Ltd A Pottery Supplier From Vietnam

2027 POTTERY CATALOGUE Glazed Ceramic Bonsai Pots

Item #: VNP70546
4 available sizes



Item #: VNP70546- 6"
6" Bonsai Pot with saucer
Product N.W: 3.75 Lbs
Packing: 216 pcs/crate
Crate Meas.: 43.5 cbf
MOQ: 2 crates = 432 pcs,
for max. 2 colors



Item #: VNP70546- 8"
8" Bonsai Pot with saucer
Product N.W: 4.85 Lbs
Packing: 120 pcs/crate
Crate Meas.: 53.0 cbf
MOQ: 3 crates = 360 pcs,
for max. 2 colors



Item #: VNP70546- 10"
10" Bonsai Pot with saucer
Product N.W: 5.95 Lbs
Packing: 64 pcs/crate
Crate Meas.: 55.5 cbf
MOQ: 4 crates = 256 pcs,
for max. 2 colors



Item #: VNP70546- 12"
12" Bonsai Pot with saucer
Product N.W: 7.72 Lbs
Packing: 36 pcs/crate
Crate Meas.: 51.0 cbf
MOQ: 6 crates = 216 pcs,
for max. 2 colors



Besides the below available colors, more color choices can be made from the attached [Color Chart](#)



Red (+25%)



Moss Green (+5%)



Matte Black



White



Shiny Brown



Running Blue



Vietnam Pot Co., Ltd A Pottery Supplier From Vietnam

2027 POTTERY CATALOGUE Glazed Ceramic Bonsai Pots

Item #: VNP70547
4 available sizes



Item #: VNP70547- 6"
6" Bonsai Pot with saucer
Product N.W: 4.19 Lbs
Packing: 216 pcs/crate
Crate Meas.: 49.0 cbf
MOQ: 2 crates = 432 pcs,
for max. 2 colors



Item #: VNP70547- 8"
8" Bonsai Pot with saucer
Product N.W: 5.29 Lbs
Packing: 64 pcs/crate
Crate Meas.: 35.5 cbf
MOQ: 4 crates = 256 pcs,
for max. 2 colors



Item #: VNP70547- 10"
10" Bonsai Pot with saucer
Product N.W: 6.61 Lbs
Packing: 64 pcs/crate
Crate Meas.: 60.0 cbf
MOQ: 4 crates = 256 pcs,
for max. 2 colors



Item #: VNP70547- 12"
12" Bonsai Pot with saucer
Product N.W: 7.72 Lbs
Packing: 36 pcs/crate
Crate Meas.: 61.0 cbf
MOQ: 6 crates = 216 pcs,
for max. 2 colors



Besides the below available colors, more color choices can be made from the attached Color Chart



Red (+25%)



Moss Green (+5%)



Matte Black



White



Shiny Brown



Running Blue



Item #: VNP70548
4 available sizes



Item #: VNP70548- 6"
6" Bonsai Pot with saucer
Product N.W: 5.51 Lbs
Packing: 180 pcs/crate
Crate Meas.: 47.5 cbf
MOQ: 2 crates = 360 pcs,
for max. 2 colors



Item #: VNP70548- 8"
8" Bonsai Pot with saucer
Product N.W: 6.61 Lbs
Packing: 64 pcs/crate
Crate Meas.: 38.5 cbf
MOQ: 4 crates = 256 pcs,
for max. 2 colors



Item #: VNP70548- 10"
10" Bonsai Pot with saucer
Product N.W: 7.72 Lbs
Packing: 48 pcs/crate
Crate Meas.: 51.0 cbf
MOQ: 5 crates = 240 pcs,
for max. 2 colors



Item #: VNP70548- 12"
12" Bonsai Pot with saucer
Product N.W: 8.82 Lbs
Packing: 36 pcs/crate
Crate Meas.: 65.0 cbf
MOQ: 6 crates = 216 pcs,
for max. 2 colors



Besides the below available colors, more color choices can be made from the attached Color Chart



Red (+25%)



Moss Green (+5%)



Matte Black



White



Shiny Brown



Running Blue



Vietnam Pot Co., Ltd A Pottery Supplier From Vietnam

2027 POTTERY CATALOGUE Glazed Ceramic Bonsai Pots

Item #: VNP70549
4 available sizes



Item #: VNP70549- 6"
6" Bonsai Pot with saucer
Product N.W: 3.97 Lbs
Packing: 252 pcs/crate
Crate Meas.: 51.0 cbf
MOQ: 2 crates = 504 pcs,
for max. 2 colors



Item #: VNP70549- 8"
8" Bonsai Pot with saucer
Product N.W: 5.07 Lbs
Packing: 80 pcs/crate
Crate Meas.: 38.5 cbf
MOQ: 4 crates = 320 pcs,
for max. 2 colors



Item #: VNP70549- 10"
10" Bonsai Pot with saucer
Product N.W: 6.17 Lbs
Packing: 64 pcs/crate
Crate Meas.: 57.5 cbf
MOQ: 4 crates = 256 pcs,
for max. 2 colors



Item #: VNP70549- 12"
12" Bonsai Pot with saucer
Product N.W: 7.28 Lbs
Packing: 36 pcs/crate
Crate Meas.: 53.0 cbf
MOQ: 6 crates = 216 pcs,
for max. 2 colors



Besides the below available colors, more color choices can be made from the attached Color Chart



Red (+25%)



Moss Green (+5%)



Matte Black



White



Shiny Brown



Running Blue



Vietnam Pot Co., Ltd
A Pottery Supplier From Vietnam

2027 POTTERY CATALOGUE
Glazed Ceramic Bonsai Pots

Item #: VNP70550
4 available sizes



Item #: VNP70550- 6"
6" Bonsai Pot with saucer
 Product N.W: 1.32 Lbs
Packing: 864 pcs/crate
Crate Meas.: 47.5 cbf
MOQ: 1 crate = 864 pcs,
 for max. 4 colors



Item #: VNP70550- 8"
8" Bonsai Pot with saucer
 Product N.W: 2.20 Lbs
Packing: 360 pcs/crate
Crate Meas.: 53.5 cbf
MOQ: 1 crate = 360 pcs,
 for max. 2 colors



Item #: VNP70550- 10"
10" Bonsai Pot with saucer
 Product N.W: 3.09 Lbs
Packing: 192 pcs/crate
Crate Meas.: 47.0 cbf
MOQ: 1 crate = 192 pcs,
 for max. 1 color



Item #: VNP70550- 12"
12" Bonsai Pot with saucer
 Product N.W: 3.97 Lbs
Packing: 72 pcs/crate
Crate Meas.: 40.5 cbf
MOQ: 3 crates = 216 pcs,
 for max. 1 color



White

Besides the below available colors, more color choices can be made from the attached Color Chart



Red (+25%)



Moss Green (+5%)



White



Shiny Brown



Vietnam Pot Co., Ltd A Pottery Supplier From Vietnam

2027 POTTERY CATALOGUE Glazed Ceramic Bonsai Pots

Item #: VNP70551
4 available sizes



Item #: VNP70551- 6"
6" Bonsai Pot with saucer
Product N.W: 1.98 Lbs
Packing: 324 pcs/crate
Crate Meas.: 41.5 cbf
MOQ: 1 crate = 324 pcs,
for max. 1 color



Item #: VNP70551- 8"
8" Bonsai Pot with saucer
Product N.W: 3.09 Lbs
Packing: 128 pcs/crate
Crate Meas.: 40.5 cbf
MOQ: 2 crates = 256 pcs,
for max. 1 color



Item #: VNP70551- 10"
10" Bonsai Pot with saucer
Product N.W: 4.19 Lbs
Packing: 96 pcs/crate
Crate Meas.: 55.5 cbf
MOQ: 3 crates = 288 pcs,
for max. 1 color



Item #: VNP70551- 12"
12" Bonsai Pot with saucer
Product N.W: 5.29 Lbs
Packing: 40 pcs/crate
Crate Meas.: 40.5 cbf
MOQ: 5 crates = 200 pcs,
for max. 1 color



Besides the below available colors, more color choices can be made from the attached Color Chart



Red (+25%)



Moss Green (+5%)



Matte Black



Shiny Brown



Running Blue



Vietnam Pot Co., Ltd A Pottery Supplier From Vietnam

2027 POTTERY CATALOGUE Glazed Ceramic Bonsai Pots

Item #: VNP70552
4 available sizes



Item #: VNP70552- 6"
6" Bonsai Pot with saucer
Product N.W: 2.87 Lbs
Packing: 432 pcs/crate
Crate Meas.: 44.0 cbf
MOQ: 1 crate = 432 pcs,
for max. 2 colors



Item #: VNP70552- 8"
8" Bonsai Pot with saucer
Product N.W: 3.97 Lbs
Packing: 128 pcs/crate
Crate Meas.: 38.5 cbf
MOQ: 2 crates = 256 pcs,
for max. 1 color



Item #: VNP70552- 10"
10" Bonsai Pot with saucer
Product N.W: 5.07 Lbs
Packing: 112 pcs/crate
Crate Meas.: 60.0 cbf
MOQ: 2 crates = 224 pcs,
for max. 1 color



Item #: VNP70552- 12"
12" Bonsai Pot with saucer
Product N.W: 6.17 Lbs
Packing: 40 pcs/crate
Crate Meas.: 38.0 cbf
MOQ: 5 crates = 200 pcs,
for max. 1 color



Besides the below available colors, more color choices can be made from the attached Color Chart



Red (+25%)



Moss Green (+5%)



Matte Black



White



Shiny Brown



Running Blue



Vietnam Pot Co., Ltd

A Pottery Supplier From Vietnam

2027 POTTERY CATALOGUE

Glazed Ceramic Bonsai Pots

Item #: VNP70418
4 available sizes

Item #: VNP70418- 6"
6" Bonsai Pot with saucer
Product N.W: 1.21 Lbs
Packing: 200 pcs/crate
Crate Meas.: 18.0 cbf
MOQ: 2 crates = 400 pcs,
for max. 2 colors



Item #: VNP70418- 8"
8" Bonsai Pot with saucer
Product N.W: 2.20 Lbs
Packing: 192 pcs/crate
Crate Meas.: 35.5 cbf
MOQ: 2 crates = 384 pcs,
for max. 2 colors



Item #: VNP70418- 10"
10" Bonsai Pot with saucer
Product N.W: 3.53 Lbs
Packing: 100 pcs/crate
Crate Meas.: 32.5 cbf
MOQ: 3 crates = 300 pcs,
for max. 2 colors



Item #: VNP70418- 12"
12" Bonsai Pot with saucer
Product N.W: 5.07 Lbs
Packing: 66 pcs/crate
Crate Meas.: 50.5 cbf
MOQ: 4 crates = 264 pcs,
for max. 2 colors



Besides the below available colors, more color choices can be made from the attached Color Chart



Red (+25%)



Jade Green



Dotted Blue



Cream



White



Shiny Brown



Bronze (+25%)



Shiny Black
(+10%)



Vietnam Pot Co., Ltd A Pottery Supplier From Vietnam

2027 POTTERY CATALOGUE Glazed Ceramic Bonsai Pots

Item #: VNP70419
4 available sizes

Item #: VNP70419- 6"
6" Bonsai Pot with saucer
Product N.W: 1.32 Lbs
Packing: 200 pcs/crate
Crate Meas.: 20.5 cbf
MOQ: 2 crates = 400 pcs,
for max. 2 colors



Item #: VNP70419- 8"
8" Bonsai Pot with saucer
Product Dimensions: 2.31 Lbs
Packing: 200 pcs/crate
Crate Meas.: 45.0 cbf
MOQ: 2 crates = 400 pcs,
for max. 2 colors



Item #: VNP70419- 10"
10" Bonsai Pot with saucer
Product N.W: 3.75 Lbs
Packing: 100 pcs/crate
Crate Meas.: 41.0 cbf
MOQ: 3 crates = 300 pcs,
for max. 2 colors



Item #: VNP70419- 12"
12" Bonsai Pot with saucer
Product N.W: 5.29 Lbs
Packing: 66 pcs/crate
Crate Meas.: 45.0 cbf
MOQ: 4 crates = 264 pcs,
for max. 2 colors



Besides the below available colors, more color choices can be made from the attached Color Chart



Shiny Black
(+10%)

Jade Green

Dotted Blue

Cream

Avocado (+10%)

White

Shiny Brown

Matte Black

Running Blue



Vietnam Pot Co., Ltd A Pottery Supplier From Vietnam

2027 POTTERY CATALOGUE Glazed Ceramic Bonsai Pots

Item #: VNP70420
4 available sizes

Item #: VNP70420- 6"
6" Bonsai Pot with saucer
Product N.W.: 1.10 Lbs
Packing: 200 pcs/crate
Crate Meas.: 18.0 cbf
MOQ: 2 crates = 400 pcs,
for max. 2 colors



Item #: VNP70420- 8"
8" Bonsai Pot with saucer
Product N.W.: 1.76 Lbs
Packing: 192 pcs/crate
Crate Meas.: 35.5 cbf
MOQ: 2 crates = 384 pcs,
for max. 2 colors



Item #: VNP70420- 10"
10" Bonsai Pot with saucer
Product N.W.: 2.98 Lbs
Packing: 100 pcs/crate
Crate Meas.: 35.0 cbf
MOQ: 3 crates = 300 pcs,
for max. 2 colors



Item #: VNP70420- 12"
12" Bonsai Pot with saucer
Product N.W.: 3.97 Lbs
Packing: 66 pcs/crate
Crate Meas.: 40.5 cbf
MOQ: 4 crates = 264 pcs,
for max. 2 colors



Besides the below available colors, more color choices can be made from the attached Color Chart



Shiny Black (+10%)



Jade Green



Dotted Blue



Avocado (+10%)



Red (+25%)



Running Blue



Item #: VNP70421
4 available sizes

Item #: VNP70421- 6"
6" Bonsai Pot with saucer
Product N.W: 1.76 Lbs
Packing: 200 pcs/crate
Crate Meas.: 18.0 cbf
MOQ: 2 crates = 400 pcs,
for max. 2 colors



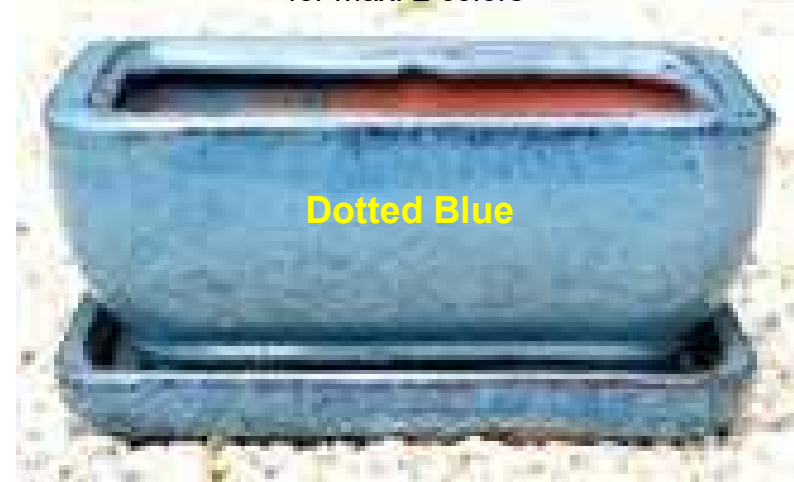
Item #: VNP70421- 8"
8" Bonsai Pot with saucer
Product N.W: 2.65 Lbs
Packing: 192 pcs/crate
Crate Meas.: 37.5 cbf
MOQ: 2 crates = 384 pcs,
for max. 2 colors



Item #: VNP70421- 10"
10" Bonsai Pot with saucer
Product N.W: 3.53 Lbs
Packing: 100 pcs/crate
Crate Meas.: 35.0 cbf
MOQ: 3 crates = 300 pcs,
for max. 2 colors



Item #: VNP70421- 12"
12" Bonsai Pot with saucer
Product N.W: 4.63 Lbs
Packing: 66 pcs/crate
Crate Meas.: 43.0 cbf
MOQ: 4 crates = 264 pcs,
for max. 2 colors



Besides the below available colors, more color choices can be made from the attached Color Chart



Blossomed Black (+10%)



Jade Green



Dotted Blue



Cream



Red (+25%)



Shiny Brown



Bronze (+25%)



Running Blue



Item #: VNP70422
4 available sizes

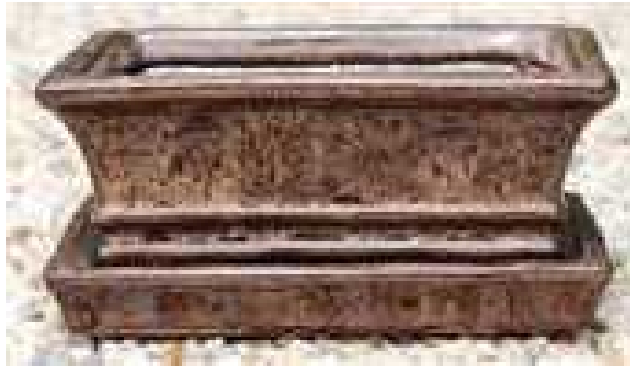
Item #: VNP70422- 6"
6" Bonsai Pot with saucer
 Product N.W: 1.54 Lbs
 Packing: 200 pcs/crate
 Crate Meas.: 18.0 cbf
 MOQ: 2 crates = 400 pcs,
 for max. 2 colors



Item #: VNP70422- 8"
8" Bonsai Pot with saucer
 Product N.W: 2.65 Lbs
 Packing: 192 pcs/crate
 Crate Meas.: 37.5 cbf
 MOQ: 2 crates = 384 pcs,
 for max. 2 colors



Item #: VNP70422- 10"
10" Bonsai Pot with saucer
 Product N.W: 3.97 Lbs
 Packing: 100 pcs/crate
 Crate Meas.: 35.0 cbf
 MOQ: 3 crates = 300 pcs,
 for max. 2 colors



Item #: VNP70422- 12"
12" Bonsai Pot with saucer
 Product N.W: 5.51 Lbs
 Packing: 66 pcs/crate
 Crate Meas.: 43.0 cbf
 MOQ: 4 crates = 264 pcs,
 for max. 2 colors



Besides the below available colors, more color choices can be made from the attached Color Chart



Blossomed Black (+10%)



Jade Green



Dotted Blue



White



Moss Green (+5%)



Blossomed Brown (+5%)



Matte Black



Running Blue



Item #: VNP70423
4 available sizes

Item #: VNP70422- 6"
6" Bonsai Pot with saucer
Product N.W: 1.54 Lbs
Packing: 200 pcs/crate
Crate Meas.: 18.0 cbf
MOQ: 2 crates = 400 pcs,
for max. 2 colors



Item #: VNP70422- 8"
8" Bonsai Pot with saucer
Product N.W: 2.65 Lbs
Packing: 192 pcs/crate
Crate Meas.: 37.5 cbf
MOQ: 2 crates = 384 pcs,
for max. 2 colors



Item #: VNP70422- 10"
10" Bonsai Pot with saucer
Product N.W: 3.97 Lbs
Packing: 100 pcs/crate
Crate Meas.: 35.0 cbf
MOQ: 3 crates = 300 pcs,
for max. 2 colors



Item #: VNP70422- 12"
12" Bonsai Pot with saucer
Product N.W: 5.51 Lbs
Packing: 66 pcs/crate
Crate Meas.: 43.0 cbf
MOQ: 4 crates = 264 pcs,
for max. 2 colors



Besides the below available colors, more color choices can be made from the attached Color Chart



Blossomed Black (+10%)



Jade Green



Bronze (+25%)



White



Moss Green (+5%)



Shiny Brown



Red (+25%)



Avocado (+10%)



Running Blue



Vietnam Pot Co., Ltd A Pottery Supplier From Vietnam

2027 POTTERY CATALOGUE Glazed Ceramic Bonsai Pots

Item #: VNP70424
4 available sizes

Item #: VNP70424- 6"
6" Bonsai Pot with saucer
Product N.W: 0.99 Lbs
Packing: 200 pcs/crate
Crate Meas.: 18.0 cbf
MOQ: 2 crates = 400 pcs,
for max. 2 colors



Item #: VNP70424- 8"
8" Bonsai Pot with saucer
Product N.W: 1.54 Lbs
Packing: 192 pcs/crate
Crate Meas.: 37.5 cbf
MOQ: 2 crates = 384 pcs,
for max. 2 colors



Item #: VNP70424- 10"
10" Bonsai Pot with saucer
Product N.W: 2.43 Lbs
Packing: 100 pcs/crate
Crate Meas.: 35.0 cbf
MOQ: 3 crates = 300 pcs,
for max. 2 colors



Item #: VNP70424- 12"
12" Bonsai Pot with saucer
Product N.W: 3.31 Lbs
Packing: 66 pcs/crate
Crate Meas.: 40.5 cbf
MOQ: 4 crates = 264 pcs,
for max. 2 colors



Besides the below available colors, more color choices can be made from the attached Color Chart



Shiny Black
(+10%)



Jade Green



Red (+25%)



White



Blossomed
Brown (+5%)



Shiny Brown



Matte Black



Dotted Blue



Running Blue



Vietnam Pot Co., Ltd A Pottery Supplier From Vietnam

2027 POTTERY CATALOGUE Glazed Ceramic Bonsai Pots

Item #: VNP70425
4 available sizes

Item #: VNP70425- 6"
6" Bonsai Pot with saucer
Product N.W: 1.54 Lbs
Packing: 200 pcs/crate
Crate Meas.: 18.0 cbf
MOQ: 2 crates = 400 pcs,
for max. 2 colors



Item #: VNP70425- 8"
8" Bonsai Pot with saucer
Product N.W: 2.65 Lbs
Packing: 192 pcs/crate
Crate Meas.: 37.5 cbf
MOQ: 2 crates = 384 pcs,
for max. 2 colors



Item #: VNP70425- 10"
10" Bonsai Pot with saucer
Product N.W: 3.97 Lbs
Packing: 100 pcs/crate
Crate Meas.: 35.0 cbf
MOQ: 3 crates = 300 pcs,
for max. 2 colors



Item #: VNP70425- 12"
12" Bonsai Pot with saucer
Product N.W: 5.51 Lbs
Packing: 66 pcs/crate
Crate Meas.: 43.0 cbf
MOQ: 4 crates = 264 pcs,
for max. 2 colors



Besides the below available colors, more color choices can be made from the attached Color Chart



Shiny Black
(+10%)



Jade Green



Red (+25%)



Moss Green
(+5%)



Blossomed
Brown (+5%)



Shiny Brown



Matte Black



Blossomed
Black (+10%)



Running Blue



Vietnam Pot Co., Ltd
A Pottery Supplier From Vietnam

2027 POTTERY CATALOGUE
Glazed Ceramic Bonsai Pots

Item #: VNP70426
4 available sizes

Item #: VNP70426- 6"
6" Bonsai Pot with saucer
Product N.W: 1.21 Lbs
Packing: 200 pcs/crate
Crate Meas.: 18.0 cbf
MOQ: 2 crates = 400 pcs,
for max. 2 colors



Item #: VNP70426- 8"
8" Bonsai Pot with saucer
Product N.W: 2.20 Lbs
Packing: 192 pcs/crate
Crate Meas.: 35.5 cbf
MOQ: 2 crates = 384 pcs,
for max. 2 colors



Item #: VNP70426- 10"
10" Bonsai Pot with saucer
Product N.W: 3.53 Lbs
Packing: 100 pcs/crate
Crate Meas.: 32.5 cbf
MOQ: 3 crates = 300 pcs,
for max. 2 colors



Item #: VNP70426- 12"
12" Bonsai Pot with saucer
Product N.W: 5.07 Lbs
Packing: 66 pcs/crate
Crate Meas.: 40.5 cbf
MOQ: 4 crates = 264 pcs,
for max. 2 colors



Besides the below available colors, more color choices can be made from the attached Color Chart



Avocado (+10%) Jade Green

Red (+25%)

Dotted Blue

White

Shiny Brown

Matte Black

Blossomed
Black (+10%)

Running Blue



Vietnam Pot Co., Ltd

A Pottery Supplier From Vietnam

2027 POTTERY CATALOGUE

Glazed Ceramic Bonsai Pots

Item #: VNP70427
4 available sizes

Item #: VNP70427- 6"
6" Bonsai Pot with saucer
Product N.W: 1.2 Lbs
Packing: 200 pcs/crate
Crate Meas.: 18.0 cbf
MOQ: 2 crates = 400 pcs,
for max. 2 colors



Item #: VNP70427- 8"
8" Bonsai Pot with saucer
Product N.W: 2.20 Lbs
Packing: 192 pcs/crate
Crate Meas.: 35.5 cbf
MOQ: 2 crates = 384 pcs,
for max. 2 colors



Item #: VNP70427- 10"
10" Bonsai Pot with saucer
Product N.W: 3.53 Lbs
Packing: 96 pcs/crate
Crate Meas.: 37.5 cbf
MOQ: 3 crates = 288 pcs,
for max. 2 colors



Item #: VNP70427- 12"
12" Bonsai Pot with saucer
Product N.W: 5.07 Lbs
Packing: 66 pcs/crate
Crate Meas.: 40.5 cbf
MOQ: 4 crates = 264 pcs,
for max. 2 colors



Besides the below available colors, more color choices can be made from the attached Color Chart



Shiny Black
(+10%)

Jade Green

Blossomed
Brown (+5%)

White

Matte Black

Dotted Blue

Avocado (+10%)

Running Blue

COLOR CHART FOR GLAZED CERAMIC SELF-WATERING POTS

Besides the colors shown next to each style in this catalogue, all the Bonsai pots in this catalogue can be ordered in the following colors:



Red (+25%)



Moss Green (+5%)



White



Matte Black



Shiny Brown



Running Blue



Avocado (+10%)



Blossomed Black
(10%)



Dotted Blue



Jade Green



Blossomed Brown
(+5%)



Bronze (+25%)

---End of 2027 Catalogue For Glazed Ceramic Bonsai Pots---